

Mazak MTConnect Adapters Available By Product

Mazak USA Part #	CNC Model	CNC O/S	CNC Main s/w ver	Release Date	MTC Ver	Machine Model
CCWMPD0360E	640T NEXUS	Win95	BND365W004B8G	6/15/10	v1.2	Quick Turn
CCWMPD0320E	640T NEXUS	Win2k	BND36_W006A8G	6/15/10	v1.2	Quick Turn
CCWMPD0370E	640M NEXUS	Win95	BND360W004ABD	6/9/10	v1.2	M/C
CCWMPD0330E	640M NEXUS	Win2k	BND360W006A9D	6/9/10	v1.2	M/C
CCWMPD0380E	640T/MT/TE	Win95	BND365W000DDG	6/15/10	v1.2	Integrex, MPX
CCWMPD0340E	640T/MT/TE	Win2k	BND36_W002A8G	6/15/10	v1.2	Integrex, MPX
CCWMPD0390E	640M/M-5X	Win95	BND360W000CGG / BND378W000ACG	6/9/10	v1.2	M/C
CCWMPD0350E	640M/M-5X	Win2k	BND360W002AAG / BND378W002A9G	6/9/10	v1.2	M/C
CCWMPD0400E	640MTPro	Win2k	BND399W000ABD	8/19/10	v1.2	INTE MK3
CCWMPD0570E	640MPro	Win95	BND398W000ABP	7/23/12	v1.2	Integrex e-series
CCWMPD0560E	640MPro	Win2k	BND398W002A5P	7/23/12	v1.2	Integrex e-series
CCWMPD0240E	MATRIX	WinXP	E0	4/2/10	v1.2	e-series,Ramtec
CCWMPD0230E	MATRIX	WinXP	C4B	8/27/10	v1.2	INTEGREX-IV
CCWMPD0410E	MATRIX	WinXP	D4	1/7/11	V1.2	Versatech
CCWMPD0260E	MATRIX	WinXP	C3	1/5/11	V1.2	CTT,HQR,MP-II
CCWMPD0310E	MATRIX	WinXP	D3	8/20/10	v1.2	VRX, VRX-IIVRX-T,SVC
CCWMPD0270E	MATRIX	WinXP	D3	1/5/11	V1.2	VTC
CCWMPD0280E	MATRIX NEXUS	WinXP	D4	11/5/10	v1.2	VCN, HCN, FJV mk2
CCWMPD0250E	MATRIX NEXUS	WinXP	D4	11/30/10	v1.2	QTN-II, MTM, STN, CT
CCWMPD0290E	Matrix	WinXP	C9	4/1/2011	V1.2	Integrex i150-series
CCWMPD0290E	Matrix	WinXP	D1	5/1/2011	V1.2	Integrex i200-series
CCWMPD0300E	Matrix	WinXP	D2	4/25/2011	V1.2	Integrex j-series
CCWMPD0490E	MATRIX II	Win7	n/a	1/1/12	v1.2	e-series / RAMTEC, i-630V
CCWMPD0460E	MATRIX II	Win7	n/a	1/1/12	V1.2	Versatech
CCWMPD0430E	MATRIX II	Win7	n/a	1/1/12	V1.2	CTT
CCWMPD0440E	MATRIX II	Win7	n/a	1/1/12	V1.2	Multiplex
CCWMPD0420E	MATRIX II	Win7	n/a	1/1/12	v1.2	VRX i-Series, VRX, VRX-IIVRX-T
CCWMPD0480E	MATRIX II	Win7	n/a	1/1/12	v1.2	VTC-800
CCWMPD0520E	MATRIX II	Win7	n/a	1/1/12	V1.2	HyperQuadrex
CCWMPD0470E	MATRIX II	Win7	n/a	1/1/12	v1.2	HCN, VCN5x, VCU5x, FJV
CCWMPD0450E	MATRIX II	Win7	n/a	1/1/12	v1.2	QTN, QTN II LBB,STN, MTN
CCWMPD0500E	MATRIX II	Win7	n/a	1/1/12	v1.2	Integrex i-series, j-series
CCWMPD0510E	MATRIX II	Win7	n/a	1/1/12	v1.2	SVC
CCWMPD0580E	SMART CNC	N/A	A7 / A8	1/20/13	V1.1	QTS, QTU / VCS,VCU, HCU
CCWMPD0600E	SmoothX CNC	N/A	n/a	TBD	V1.3	All SmoothX
TBD	PMC-WEB	N/A	TBD	TBD	TBD	PMC-WEB

* SMART Adapters support up to four(4) SMART CNCs and require customer provided PC.

SUPPORT

<http://www.mazakusa.com>

<http://www.mtconnect.org>

<http://www.mtcup.org>

YAMAZAKI MAZAK CORPORATION

1-131 Takeda, Oguchi-cho, Niwa-gun, Aichi-pref., Japan
 TEL: 01-81-587-95-1131 FAX: 01-81-587-95-2117
www.mazak.com

MAZAK CORPORATION

8025 Production Drive
 Florence, Ky 41042
 TEL: 859-342-1700 FAX: 859-342-1865
www.mazakusa.com

DISCOVER MORE WITH

Mazak

DISCOVER MORE WITH

Mazak

Mazak Supports the MTConnect standard in it's products.



The Complete Communications Standard for Your Entire Factory

What is MTConnect?

A royalty free open standard for communication with all types of factory equipment over an Ethernet network.

What are the benefits of using MTConnect?

- * Calculate Overall Equipment Efficiency (OEE)
- * Monitor all your Factory Equipment With One System
- * Reduce production Losses
- * Targeted Improvements

What do I need to make my Mazak machines MTConnect Compliant?

- 1) Upgrade existing machines to latest Main software (Machine Prep).
- 2) Purchase machine specific MTConnect ADAPTER from Mazak.
- 3) Purchase 3rd party monitoring software or develop your own solution.
- 4) Network your machines.

What Mazak Machines are / can be Equipped with MTConnect?

All Matrix based machine models and SMART for QTS and VCS.
All Fusion based machine models.
Legacy equipment can be connected using third party solutions.

What kind of information can I get from my machines using MTConnect?

Power on/off, Spindle Speed, Axis position, Axis Speed, Feed, Block number Status, CNC mode, work number, Alarm, Spindle load, Axis load, Spindle Override Axis Override, Tool number, Tool Suffix, Tool Group number, Spindle temperature Parts count, Rapid override, Sub pro work number, Program comment, Sub pro comment, Auto operation time, cutting time, Total time, Sequence number, Unit number (MAZATROL). (Machine models and controls differ)

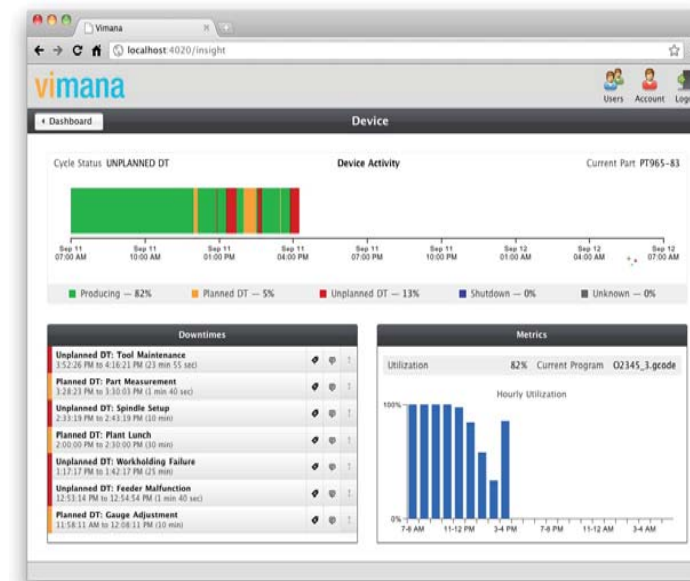
What does Mazak offer to help customers implement MTConnect in their shops?

Mazak will assist you with your PILOT project by reviewing your Mazak equipment list and identifying the required steps to reach connectivity and your objective. Please visit the Mazak MTConnect support page for self help information or contact us directly via phone or email.

Phone - 1 859-342-1881
Email - MTConnect@mazakcorp.com
<http://www.mazakusa.com>

Sample 3rd Party Application Features

- * Email and Text Notices when things go wrong
- * Smart Phone, DeskTop, and web based solutions readily available
- * Energy Management



What the System Looks Like

