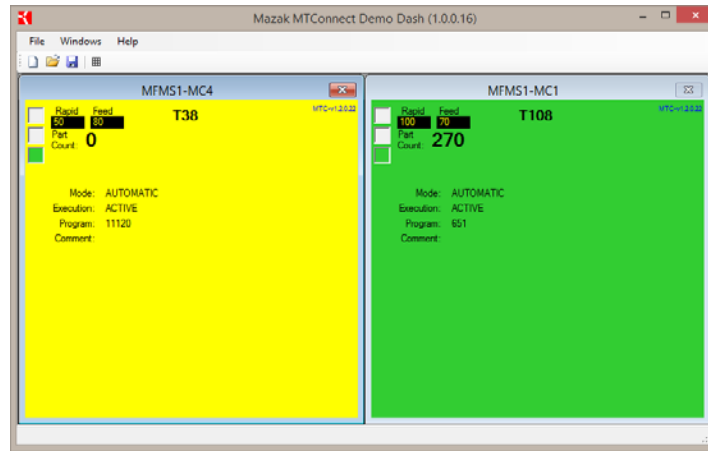


Sample **MTConnect** Dashboard
Monitor up to TWO (2) machines for free



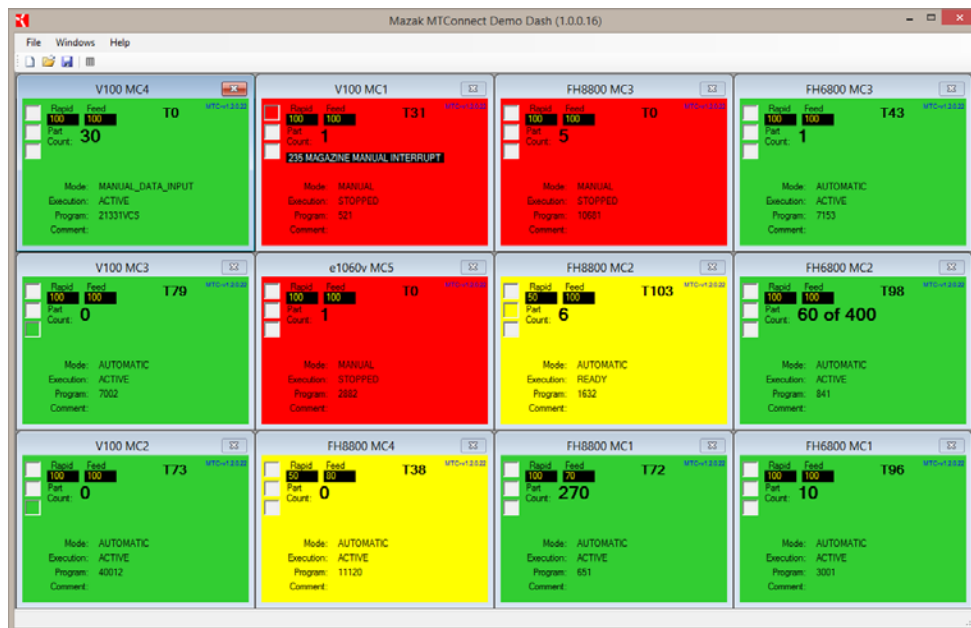
** Requires Windows 7 or later.*

Email mtconnect@mazakcorp.com for more information and your free copy.

Designed as a MTConnect start up package for shop floor level support. Operators and supervisors can see machine status with a quick glance. Color coding changes with Modes and Override levels.

This App does NOT do Calculations! Live snapshot of machine status only.

For a full working copy (license), you can request a quotation from pparts@mazakcorp.com.



Limitation for maximum # of machines is based on visibility of data and system resources.

Mazak USA Part# CCWMPD0610E

Sample Dashboard

DISCOVER MORE WITH
Mazak



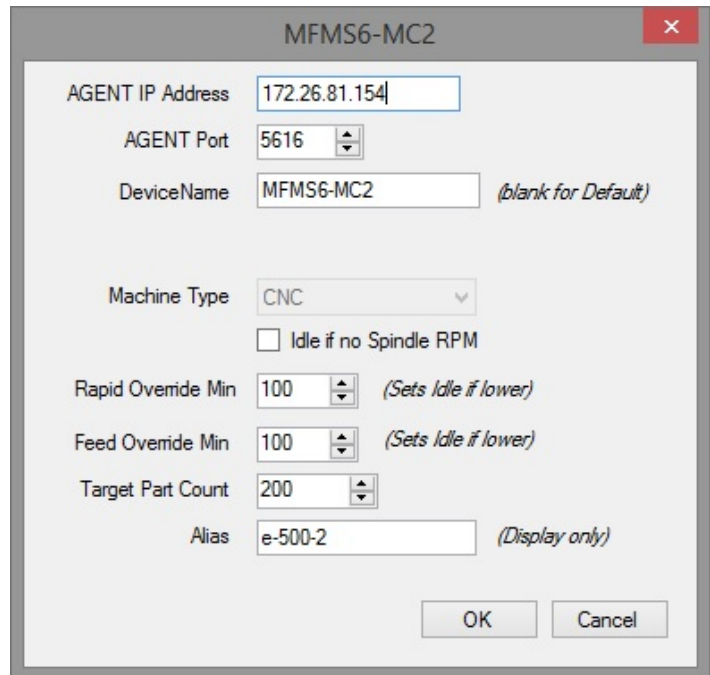
The screenshot displays the Mazak MTConnect Demo Dash interface. It features a grid of 24 machine status windows, each showing 'Rapid', 'Feed', and 'Part Count' metrics. A blue arrow points from the text 'Browse AGENT directly' to an open XML data viewer window. The XML viewer shows a stream of data for machine MFMS0-MC3, including details about its 'servo_cond' and 'rotary' components.

Browse AGENT directly

Right click on a machine window to manage Settings and access useful tools for troubleshooting.

Save your machine list for easy access on future sessions and quick start up.

Requires "Execution" tag to function properly. (Available on all Mazak Adapters, but may not be available on 3rd party Adapters. However unlikely.)



The screenshot shows the configuration dialog for machine MFMS6-MC2. The fields are as follows:

- AGENT IP Address: 172.26.81.154
- AGENT Port: 5616
- DeviceName: MFMS6-MC2 (blank for Default)
- Machine Type: CNC
- Idle if no Spindle RPM:
- Rapid Override Min: 100 (Sets Idle if lower)
- Feed Override Min: 100 (Sets Idle if lower)
- Target Part Count: 200
- Alias: e-500-2 (Display only)

Buttons for OK and Cancel are at the bottom right.

Sample **MTConnect** Dashboard

DISCOVER MORE WITH
Mazak

- Provides for arrangement of Machine windows to floor layout
- Background image of factory floor / graphic (tile, center, stretch)
- Option to load last setup on startup.

